

FALL KICKOFF NSBE X SHPE

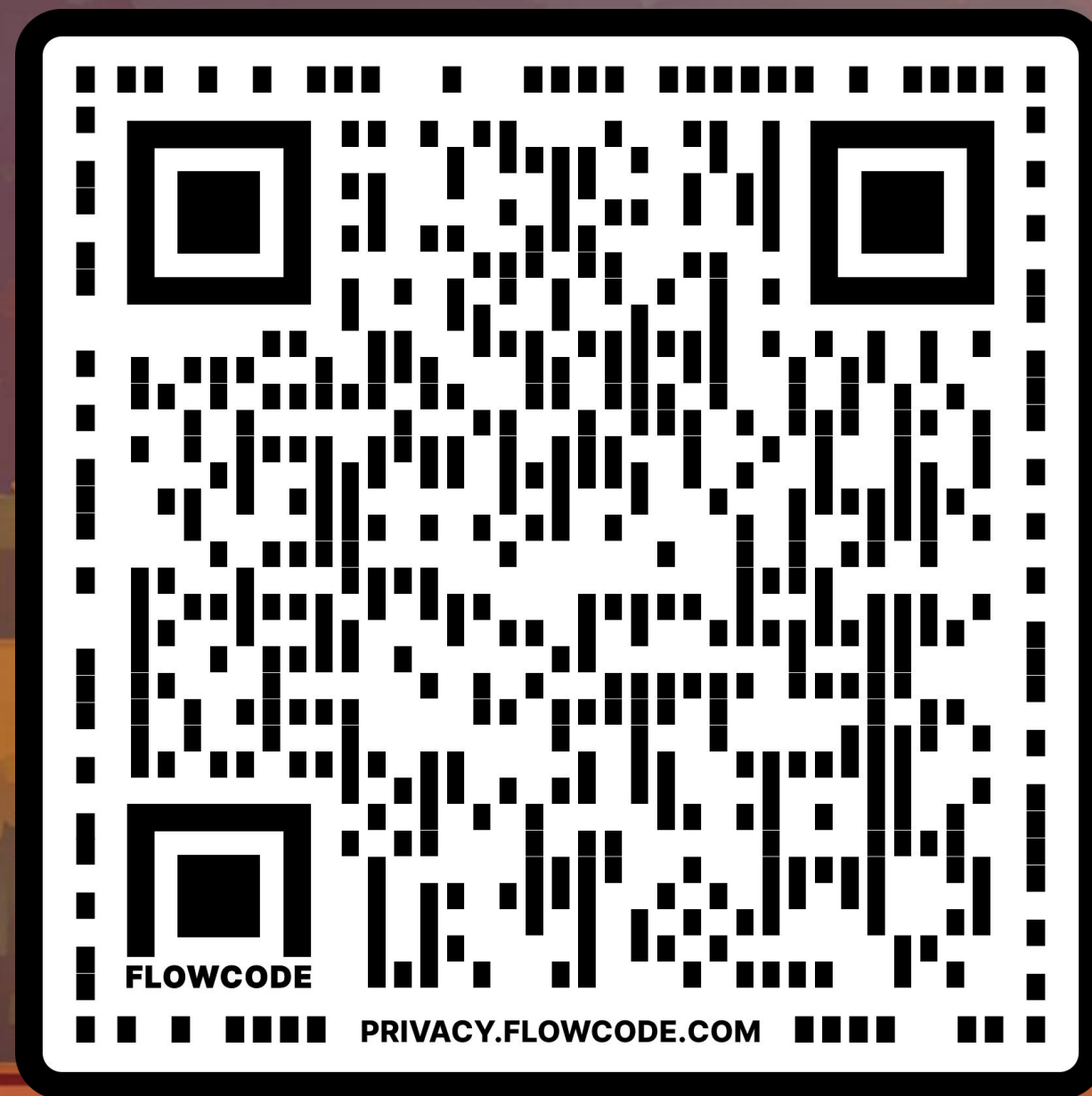
PLAY





 TQRCG

LinkTree - scan this for our
GroupMe, Technical Program,
Survival Guide, and Instagram



President:Chelsea Vital | Industrial Engineering

I love Spongebob. I eat, sleep, breathe NSBE. You guys can come to me for anything (help, ideas, resources, etc) because I am addicted on my phone.

My favorite memory was going FRC Sophomore year and exploring Milwaukee with my friends.



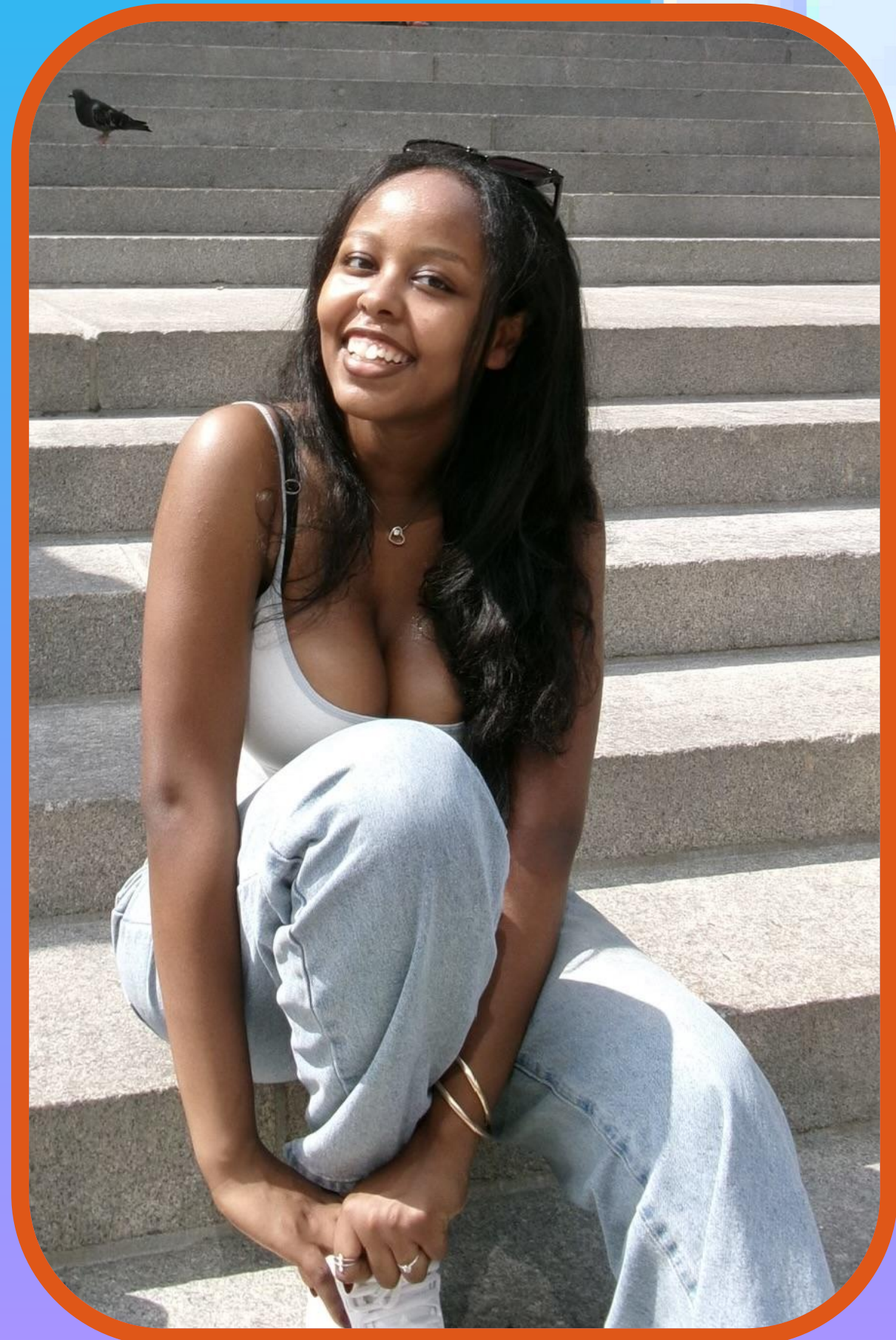
Vice President:Daggie Afework | Mechanical Engineering

X

I hope to help in any way necessary to continue creating fun activities and connection opportunities for black engineering students! I also want to keep relationships with and promote intermingling with other SGOs!

X

My favorite memory is being a part of JEB my freshmen year (junior exec board) and being able to come up with an event idea & following through with executing it!



Treasurer: Abraham Flynn | Computer Science

As an exec member, I aim to strengthen organization and communication between the board and general body, ensuring transparency and unity. I'm also committed to fostering collaboration by introducing meaningful partnerships between NSBE and NPHC organizations.

My favorite memory was Nationals - Lots of community and companies!



Finance Chair:ND Nwaneri | Computer Engineer

I want to allow NSBE to do as much as possible without having to worry about funding. I want to help NSBE function as we have for the past few years during this especially rocky time for student organizations.

My favorite memory was NSBE Trivia last spring.



Programs Chair: Daniel Solomon | Computer Engineering

My two main goals are for everyone to get an internship and gain professional development, and also for everyone to grow closer!

My favorite memory is when we played tech tag my freshman year and we had to run from the exec. It was super fun and I made a ton of friends that day.



Membership and Wellness: Sylvester Ogbemudia | Civil Engineering

My goal in this position is to strengthen the quality and integrity of this organization while also building my own personal skills.

My experience on NSBE JEB was very impactful. It was my first experience in a collegiate role.



Academic Excellence Chair: Qadir Ansah-Smith | Industrial Engineering

As Academic Excellence Chair, I seek to
Establish Mentor-Mentee Relations
Strengthen Peer-Guided Midterm
Review Sessions and Increase
Professional Development and
Networking opportunities

My favorite memory is getting my
summer internship from NSBE
nationals.



Pre-College Initiative Co-Chair: Victor Osele | Mechanical Engineer

X

Increase engagement between our NSBE community and the Evanston area as a way to inspire kids to become engineers.

X

My favorite memory was when NSBE attended STEMFEST and made paper airplanes with elementary schoolers.



Pre-College Initiative: Hozifa Elmahi | Electrical Engineer

I want to help establish more events with high schools, and other youth areas in the Chicago area

My favorite memory was NSBE Squid Games.



Publicity:Adele Wilson | Materials Science & Engineering

X

Expand the reach of our chapter by partnering with the Daily and highlighting our accomplishments as a chapter :)

X

My favorite memory was attending the "CodeIt!" showcase and playing the games that the elementary students we mentored made.



Telecommunications:Muhammad Tahir | Computer Engineer

Make a a great website and
get us to the top of google
search.

My favorite moment was tech tag
my freshman year.



Social Media Chair: Suhaib Aden | Computer Science

I want to make NSBE a fun and welcoming place for all black engineers at Northwestern.

My favorite memory is NSBE squid games and planning all the different events.





History OF NSBE

NSBE HISTORY

- NSBE is a national organization founded in 1975 with the mission "to increase the number of culturally responsible Black engineers who excel academically, succeed professionally, and positively impact the community."
- Northwestern has a student chapter of NSBE, part of Region IV - The Founding Region (Illinois, Michigan, Wisconsin, Indiana, Ohio).
- In 2012, Northwestern's NSBE chapter was named "Large Chapter of the Year" in its region, for its effectiveness in outreach, academics, and mentoring.

Point System

- General Meetings - 10 pts
- NSBE Wellness events - 5 pts
- NSBE Academic events - 5 pts
- Non-NSBE Professional events - 3 pts
 - Max 15 pts

FRC

- Region IV's Fall Regional Conference
- Career fair, Workshops, Networking, and Interviews!
- November 7-9th
- Covington, Kentucky
- Points are a large consideration
- Other factors are taken into account



NSBE FRC Application Form 2025 Due 9/21 @11:59 PM



Nationals

- NSBE National Conference
- Onsite Interviews and Offers, Workshops, Free Merch, Networking, etc.
- Nationals will be from March 18th-March 22nd
- Baltimore, Maryland





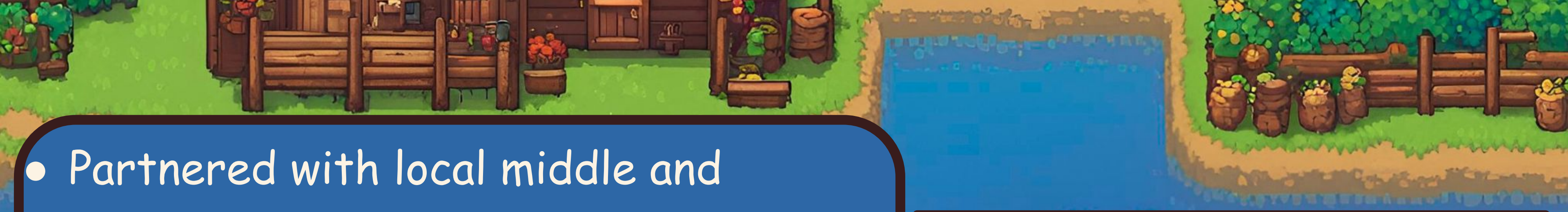
**What
We
Do**

- Companies such as Netflix and Zebra have visited to host Q&As and share insights about their work.
- Members attend two major conferences (Regionals and Nationals) —which have large career fairs with top employers.
- Resume reviews and mock interviews help members prepare for recruiting and sharpen their professional skills.



- Study tables offer a space to connect with peers and find study buddies.
- Internship opportunities are regularly posted in the chapter GroupMe for members to explore and apply to.
- Upcoming technical program for people to join. Small scale projects for their resume.





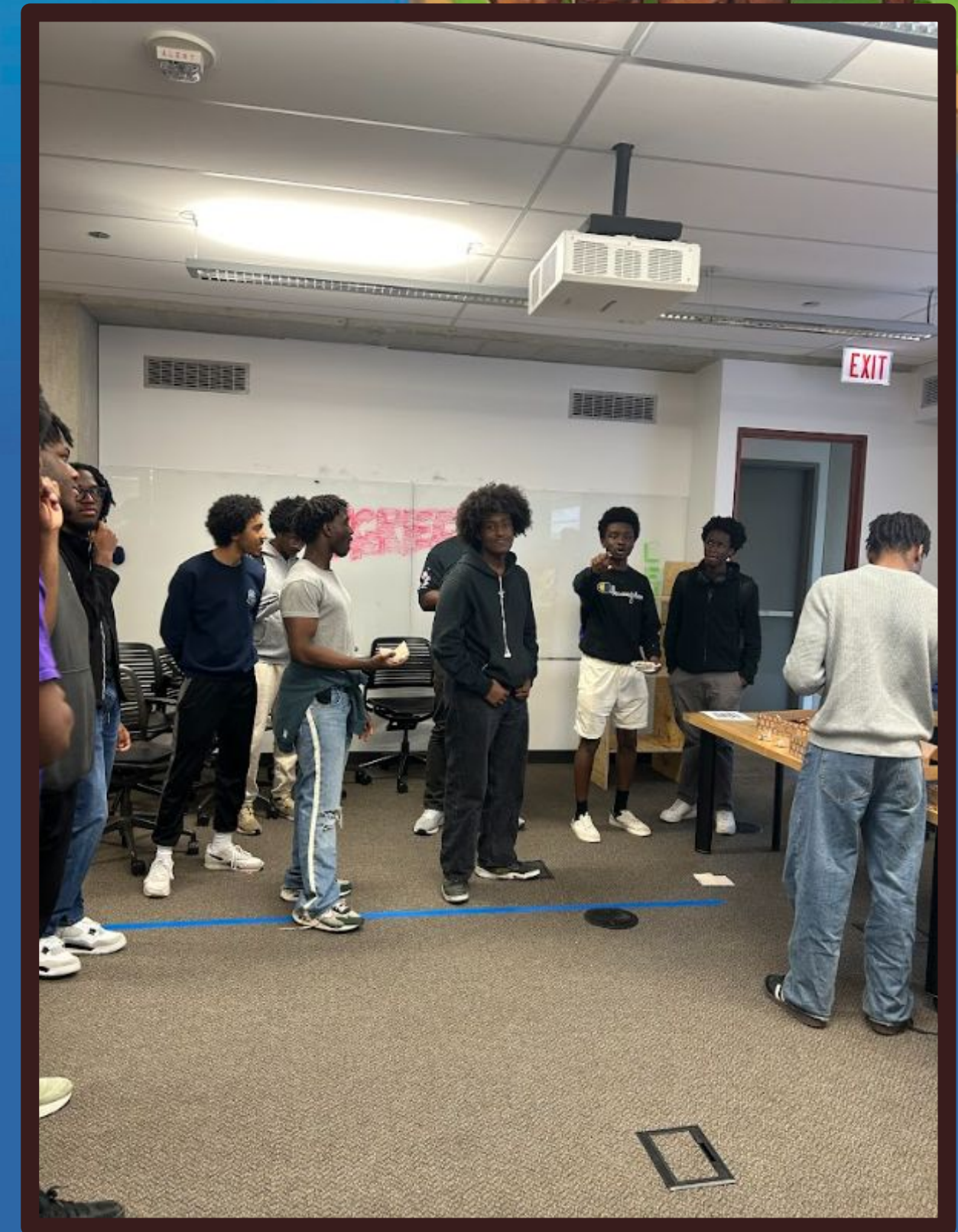
- Partnered with local middle and elementary schools through Codeit, guiding students in programming a game and 3D printing a handheld device to play it.
- Led Cardboard Carnival, where Evanston-area children designed and built their own games out of cardboard.



- Volunteered at the Evanston STEM Fest, supporting hands-on science and engineering activities.
- Members have access to many volunteer opportunities throughout the year.



- Enjoyed fun activities together, like playing Mafia at Regionals, hosting a mini trivia tournament, and even Tech Tag with past exec members.
- Held relaxed social events such as Paint & Sip to unwind and connect outside of academics.



- Beyond professional growth, NSBE is a community a place to have fun, build lasting friendships, and give back.
- Many members have formed strong bonds through NSBE, and we're excited to create the same experience for new students.



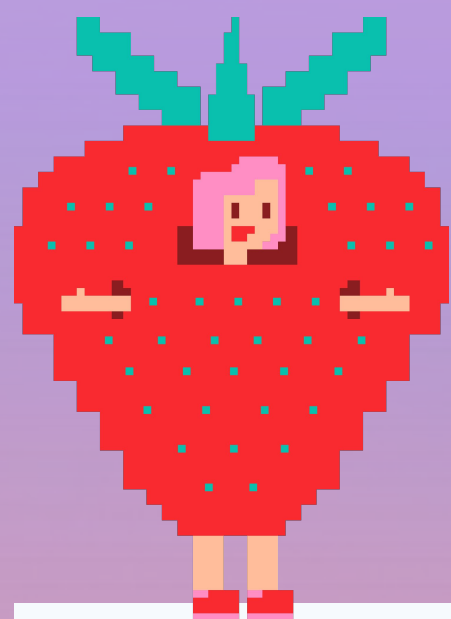
Future Events

- Next week - Zebra Q&A + Future Mentorship
- Be on the lookout for a hackathon with NSBE, SHPE, ColorStack, IEEE, and EMCO.
- Upcoming sessions with Accenture, and McKinsey.
- We also will have an info session with SEO.

SHPE Time!



SHPE Check-In!!



IMPORTANT INFO!!



GroupMe!



Linktree!



Email List!

The background is a pixel art landscape. On the left, a large, off-white rectangular sign with a red border is pinned to a purple rectangular base with a blue ribbon. The sign contains the text 'MEET THE EXEC!' in a bold, dark red, sans-serif font. To the right of the sign, a pixel art dog with tan fur and white markings on its chest and paws stands on a yellow patch of ground. The dog has a large, white exclamation mark above its head. In the background, there is a small house with a red roof and blue windows, green bushes, and a blue sky with white clouds.

**MEET THE
EXEC!**

President: Ricardo Olmos | Mechanical Engineering

What is your advice for 1st year students?

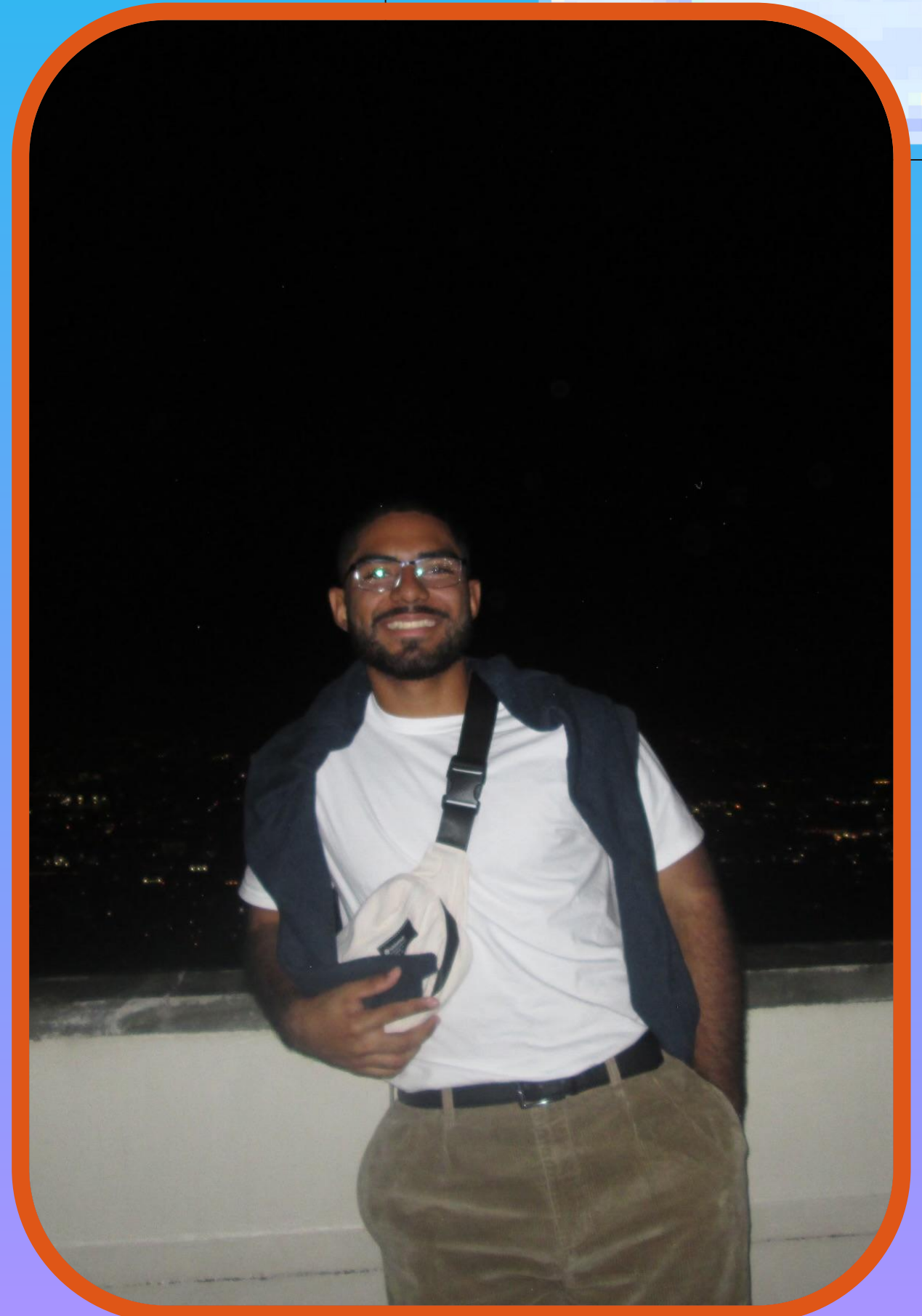


My advice for 1st year students is to meet people and get outside. Undergrad is a one time experience so make the best out of it and because meeting people and getting involved will open so many doors for you in the short and long run.

Favorite SHPE Memory



My favorite SHPE memory was my first ever general meeting because I met pretty much all of my friends and mentors there!



Vice President: Luiza Kroeff | Biomedical Engineering

What is your advice for 1st year students?



My advice for 1st year students is to not give up your hobbies and/or interests, because if they're still important, you **WILL** find time for them :) AND JOIN SHPE!!

Favorite SHPE Memory



My favorite SHPE memory was going to Skyzone with all of exec :)



Treasurer: Diego Figueroa | Mechanical Engineering

What is your advice for 1st year students?



My advice for 1st year students is to give it your all and go to office hours!

Favorite SHPE Memory



My favorite SHPE memory was playing Quiplash!!



Co-Chapter Liaison: Jose Flores | Chemical Engineering

What is your advice for 1st year students?



My advice for 1st year students is to not be afraid to try new things and step out of your comfort zone.

Favorite SHPE Memory



My favorite SHPE memory was the banquet we had this past spring!



Co-Chapter Liaison: Melany Gonzalez | Computer Science

What is your advice for 1st year students?



My advice for 1st year students is to get involved with orgs (such as SHPE or NSBE) to meet new, great people!

Favorite SHPE Memory



My favorite SHPE memory was joining FRT and planning events like slime night :)



Co-Community Outreach Chair: Diego Oliva | Biomedical Engineering

What is your advice for 1st year students?



My advice for 1st year students is to try things out! There's just as much, if not more, value in knowing you DON'T want to do something than knowing.

Favorite SHPE Memory



My favorite SHPE memory was being connected to my first mentor my freshman year - shoutout MentorSHPE!



Co-Community Outreach Chair: Aracely Arambula | Computer Science

What is your advice for 1st year students?

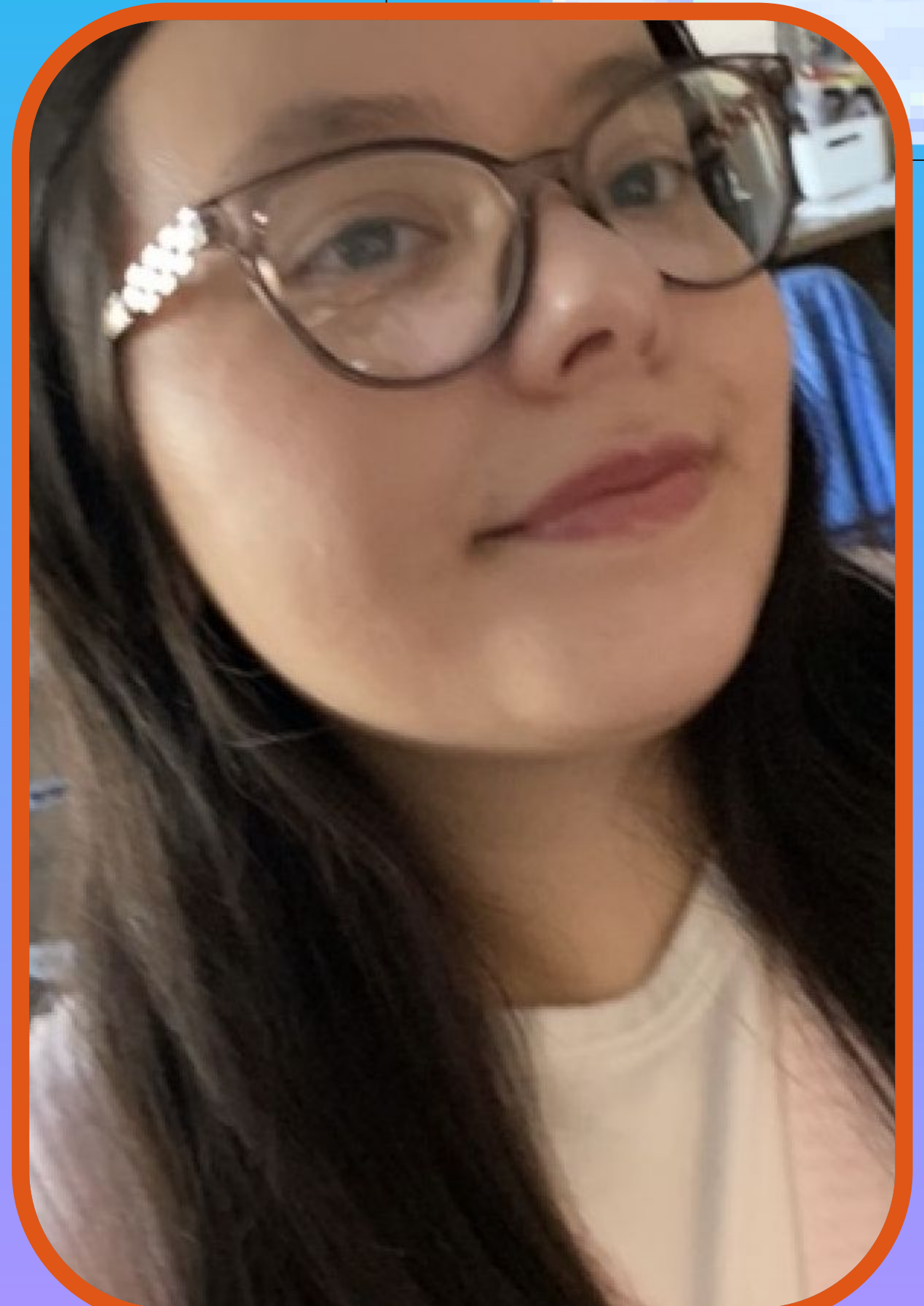


My advice for 1st year students is to definitely put yourself out there and try new things out of your comfort zone.

Favorite SHPE Memory



My favorite SHPE memory was the end of the year banquet as it was really fun and it was nice to see our community come out and celebrate.



Co-MemberSHPE Chair: Sofia Flores | Mechanical Engineering

What is your advice for 1st year students?



My advice for 1st year students is to make yourself approachable to new people and to be open minded to what your college experience can look like.

Favorite SHPE Memory



My favorite SHPE memory was the FRT Paint & Sip that I worked on freshman year!



Co-MemberSHPE Chair: Jonathan Gutierrez | Mechanical Engineering

What is your advice for 1st year students?



My advice for 1st year students is to not let perceived judgements from other people stop you from exploring new things and being yourself.

Favorite SHPE Memory



My favorite SHPE memory was the alumni panel(with previous SHPE exec), where they returned to share their experiences in industry and overall how they're doing. It was inspiring to see that full circle moment.



Professional Liaison: Jacqueline Martinez | Neuroscience

What is your advice for 1st year students?



My advice for 1st year students is to not beat yourself up over the little things. Allow yourself to breathe and be human. Give yourself grace and constantly remind yourself that you're here for a reason and you belong.

Favorite SHPE Memory



My favorite SHPE memory was the Valentine's Day paper flower making!



Financial Chair: Paulina Jimenez-Gonzalez | Mechanical Engineering

What is your advice for 1st year students?



My advice for 1st year students is to not be afraid to meet and talk to upperclassmen or ask them for help/guidance :)

Favorite SHPE Memory



My favorite SHPE memory was skyzone with exec!



SHPEtina Chair: Meadow Wales | Biomedical Engineering

What is your advice for 1st year students?



My advice for 1st year students is that you are more than just a number!! Grades neither define you nor your entire career!

Favorite SHPE Memory



My favorite SHPE memory was exploring Anaheim during last year's SHPE convention!



Social Media/Marketing Chair: Marissa Rocha Rangel | Computer Science

What is your advice for 1st year students?



My advice for 1st year students is to put yourself out there! Don't be scared to join new clubs, start new hobbies, and explore connections with new people!

Favorite SHPE Memory



My favorite SHPE memory was the cookout collab we had after Dillo! It was super fun playing volleyball even though my team kept losing :P



Webmaster: Diego Perez-Aguilar | Computer Science

What is your advice for 1st year students?

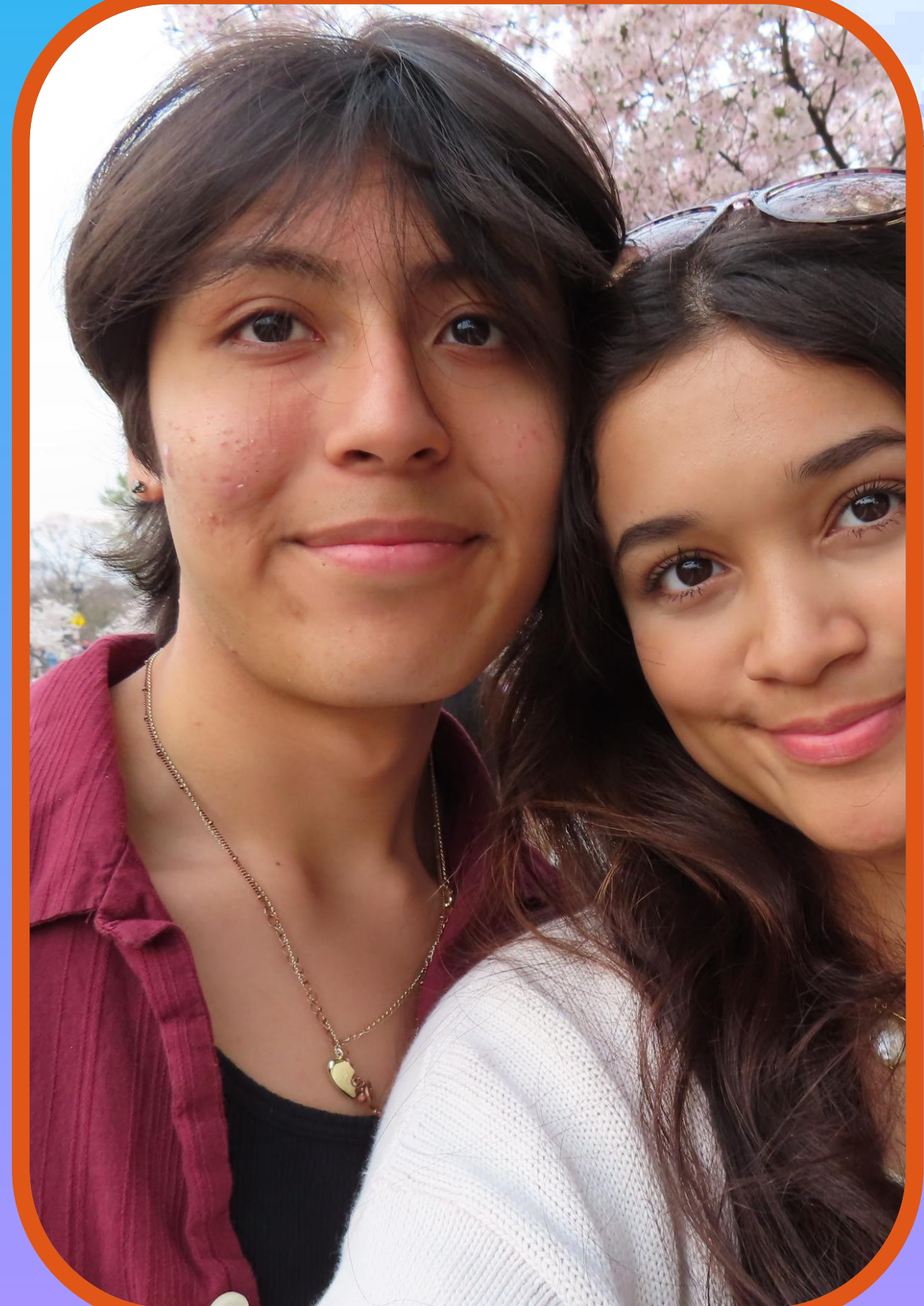


My advice for 1st year students is to find mentors in the same major as you to give advice on classes/clubs/career opportunities.

Favorite SHPE Memory



My favorite SHPE memory was SHPE cookout, I was cooking in volleyball.



WHO ARE WE?



SHPE

Leading Hispanics in STEM®

SHPE HISTORY

- SHPE is a national organization founded in 1974 with the mission "SHPE changes lives by empowering the Hispanic/Latino community to realize its full potential and to impact the world through STEM awareness, access, support, and development."
- Northwestern has a student chapter of SHPE, part of Region VII, covering 9 states across the Midwest.
- Our SHPE chapter was founded in 1992 :)
- In 2023, NU's SHPE chapter received the National "Gold Chapter Award" for demonstrating excellence in SHPE's four core values: Familia, Service, Education, and Resilience!

Social and Cultural Activities!



We host lots of different fun activities throughout the year for you all to enjoy :)

Some past ones include:

- STEM bonding with other STEM orgs
- Cookouts
- Slime night
- Paint & Sip
- Hide & Seek in Tech
- Spring Olympics with NSBE (volleyball, soccer, etc.)
- Jackbox night
- Karaoke
- and many more!

Professional Development!



We bring in different companies and alums for you all to learn from their advice and experience!

Some past companies include:

- Accenture
- Google
- IBM
- Abbott
- Microsoft
- John Deere
- Chicago Trading Company
- LinkedIn

We also host various events to help you all grow professionally with events:

- The SHPE National Convention – hosted every year where a bunch of different companies come; great way to network and potentially get an internship or job
- Seminar Series – This quarter we are a seminar series where we bring in different companies to prepare you for the recruitment process!

Community Outreach!



We also like to give back to the community, especially towards high schools in the region! Some events we've had:

- HSIP – bringing in high schools in the Evanston and Chicagoland area to Northwestern to introduce them to Northwestern while engaging them in fun engineering activities
- RSB – tutoring kids in our local SHPE Jr. chapter to prepare them for their Regional Science Bowl
- Volunteering for local events
- Inviting the SHPE Jr. chapter to some of our events

Point System

- General Meetings Check-In - 1 pt
- General Meetings Check-Out - 2 pts
- MentorSHPE Involvement - 1 pt
- Posting at an event on social media and tagging shpe_nu and shpe_region 6 - 1 pt
- SHPE Paid Membership - 2 pts
- Professional Events - 3 pts
- Regional Events - 4 pts
- Community Service Events/Volunteering - 5 pts

Get Involved!

- Freshmen Round Table →
- Committees!
- MentorSHPE →



Future Events

- September 24th - Seminar #1: Ace the Interview (with Accenture)
- September 25th - NSBE x SHPE Cookout
- September 26th - Alianza x SHPE Bienvenida
- October 1st - Seminar #2: Resume/LinkedIn Workshop (with Wells Fargo)
- Early October - Intro to SHPEtina Event



Please stand up!

ACTIVITY TIME!!

FIND PEOPLE WITH THE SAME SHIRT
COLOR AS YOU!!

FIND PEOPLE WITH THE SAME BIRTH
MONTH AS YOU!!

FIND PEOPLE FROM THE SAME
COUNTRY AS YOU!!

FIND PEOPLE FROM THE SAME STATE
AS YOU!!

FIND PEOPLE WITH THE SAME MAJOR
AS YOU!!



THANK YOU FOR JOINING US!!

Please scan the QR code for SHPE Check-Out!

EXIT

